



## Product Description

The horizontally rotatable shutter construction requires very little space in the lintel area, making it an alternative to conventional gate valve closures. The ECClos-Q meets the requirements of the classifications EI 30 to EI 120 and EW 240 (gas concrete). The shutter blade is made in a very stable sandwich construction and completely enclosed by a sheet metal cover. The ECClos-Q is suitable for continuous and separate conveyor systems, such as baggage belt conveyors. For continuous conveying techniques, the fixed field is customized and the surface can be designed according to customer requirements in various designs.

### construction type

fire protection closure during ground bound conveyors

### reopening

Motorised (standard)

### closing direction

Vertical swinging

### conveying system

Continuous belt conveyor •  
Continuous chain conveyor •  
continuous roller conveyor •  
continuous conveyor system

### fire resistant

Classified in compliance with DIN EN 13501-2 • 4 hours fire rating and 120 minutes insulation in accordance with European test standard (EN 1366-7)

### closing cycle

C5 number of closing cycles  
200.000

## Constructive structure (System drawing - Bracket)

### Required wall quality

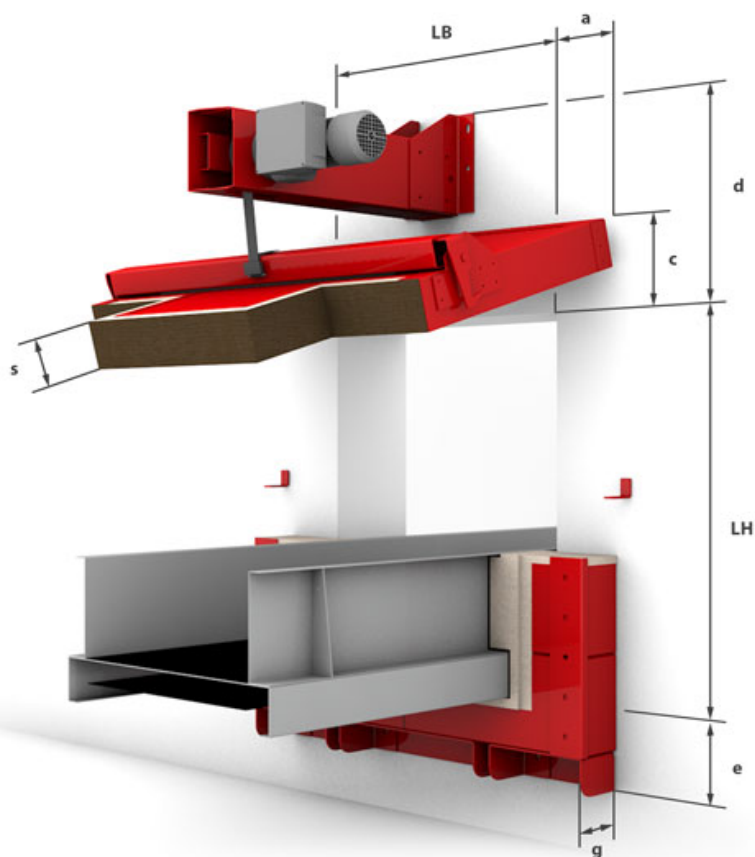
Wall thickness	$d \geq 200$ mm
Brickwork	acc. to DIN 1053-1
Concrete	acc. to DIN 1045
Aerated concrete	acc. to DIN 4165
Lightweight stud partition	acc. to DIN 4102

### Approval area

LB	850 mm - 1955 mm
LH	900 mm - 1380 mm

### Technical feasibility

LB	up to 4500 mm
LH	up to 2500 mm



a = 160    c = 257    d = 640    e = 180    g = 150    s = 122