

## SYSTEM: FIBERSHIELD®

MODEL: FIBERSHIELD®-S



## Product description

Fire protection that goes round the corner: The base area of the closure can be either rectangular or polygonal with angles between 30° and 150°. No additional support elements are required despite the corner formation. In addition to a closed polygon shape, open systems can also be realised, which are attached to the wall structure with special guide rails. The „Gravigen“ drive system installed as standard allows the fire protection curtain to be closed without external energy.

Fibershield-S can be used to realise sophisticated penetration sealing geometries and at the same time meet the requirements for room closure for 90 minutes.

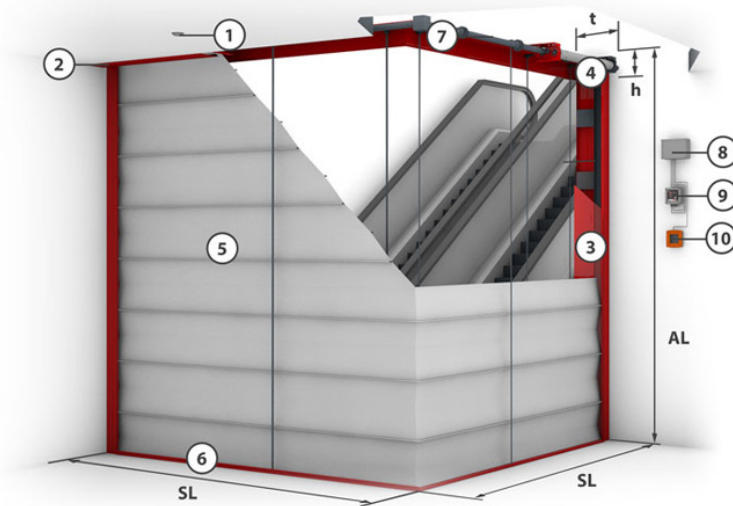
<b>Type</b>	All-round non-insulating fire protection curtain
<b>Verification</b>	IBS 08062416
<b>Closing direction</b>	From top to bottom
<b>Fire resistance</b>	E 30 – EW 90   Tested according to EN 1634-1:2014+A1:2018   Classified according to EN 13501-2:2016
<b>Closing cycles</b>	C0, C, C1   Tested according to EN 12605:2000-08 and EN 12604:2017-12   Classified according to EN 13501-2:2016
<b>Fire behaviour of textile</b>	A2-s1, d0; B-s1, d0; E-d2   Tested according to ISO 1716 and EN 13823 bzw. ISO 11295-2   Classified according to EN 13501-1:2018
<b>Environmental conditions</b>	Special environmental conditions are not taken into account (e.g. humidity > 80 %, ambient temperature < 5 °C and > 40 °C, wind loads etc.).
<b>Visible surfaces</b>	galvanized RAL, smooth, silk gloss, standard colour shade NCS standard color

## Dimensions and system design

The combination of classifications or the ratio of clear system width to clear system height may reduce the stated maximum dimensions and the dimensions of the enclosure and guide rails may vary. The specifications on the quotation apply.

Fabric	System scope	Unwind length (AL)	t	h
Ecotex 1100 A2	< 50 m	< 3 m	490 mm	125 mm
Ecotex 1100 A2	< 50 m	> 3 m - ≤ 6 m	490 mm	225 mm
Heliotex 9 EW 90	< 50 m	< 2,2 m	490 mm	125 mm
Heliotex 9 EW 90	< 50 m	> 2,2 m - ≤ 4,5 m	490 mm	225 mm
Heliotex 9 EW 90	< 50 m	> 4,5 m - ≤ 6 m	490 mm	450 mm

The installation situation must comply with the building code requirements of the country of installation. The fire resistance of a ceiling or wall support structure and the adjacent components must at least correspond to that of the fire and/or smoke protection closure/fire and/or smoke protection curtain. Proof of the stability and serviceability of the adjacent walls and components must be provided under general ambient conditions and in the event of fire. See also notes on the standard supporting structure in EN1366-7:2004 or EN1363-1:2020. The fire protection system must not be subjected to any additional loads other than its own weight, even in the event of fire. Deviations from size dimensions on request



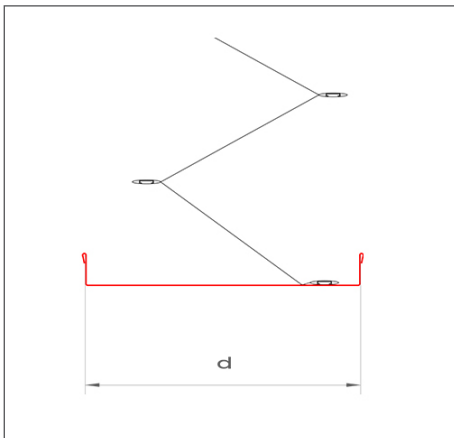
### Legend System components:

- 1 = Smoke detector
- 2 = Housing
- 3 = Guide rail
- 4 = Tubular motor
- 5 = Fabric
- 6 = End moulding
- 7 = Wrap
- 8 = Control module
- 9 = Control with operating unit
- 10 = Manual release

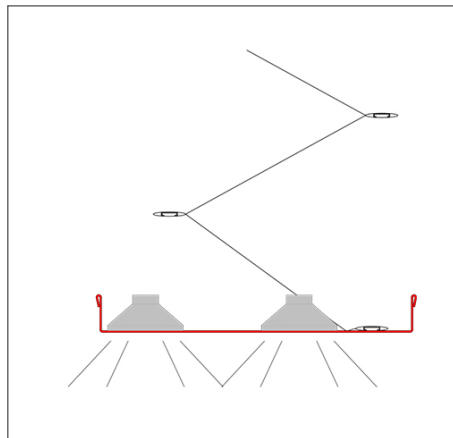
SL= System length

## End mouldings

### Standard

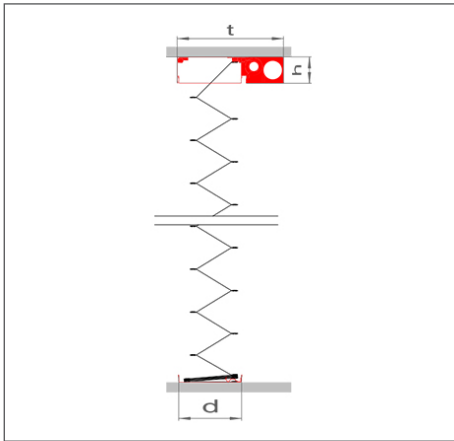


### Special (with spotlights and light strip)



## Standard housing

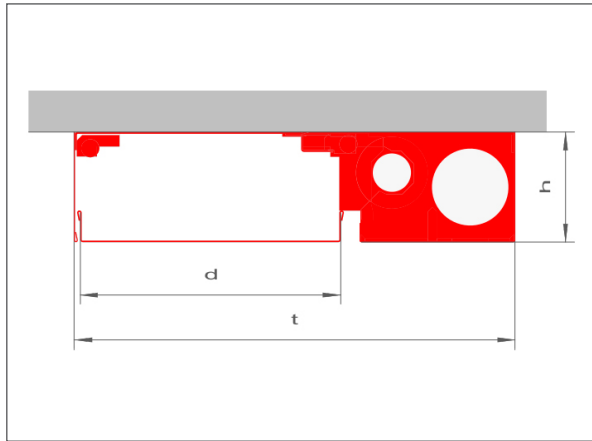
Housing (open)



h = from table  
t = 490 mm

d = 290 mm

Housing (closed)

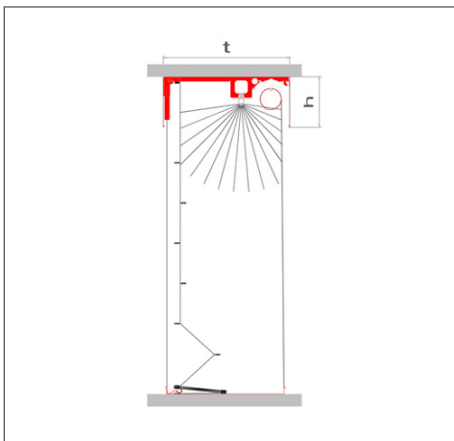


h = from table  
t = 490 mm

d = 290 mm

## Special housing

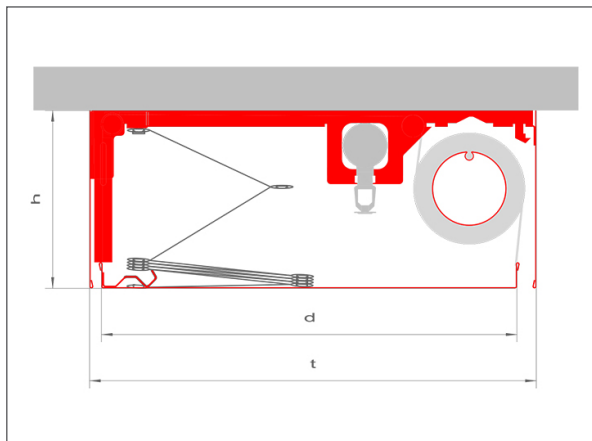
Housing EI (open)



h = 240 mm  
t = 490 mm

d = 290 mm

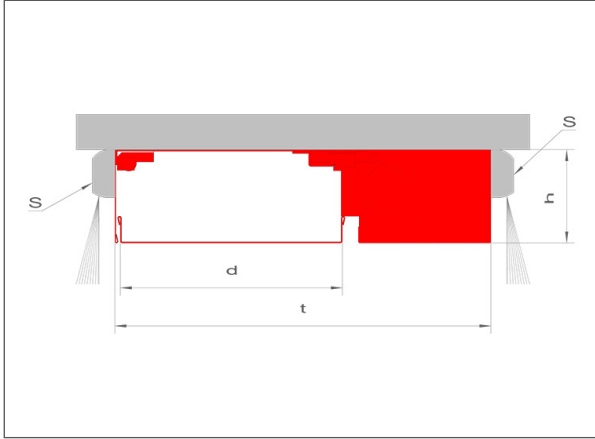
Housing EI (closed)



h = 240 mm  
t = 600 mm

d = 560 mm

Safety device (optional)

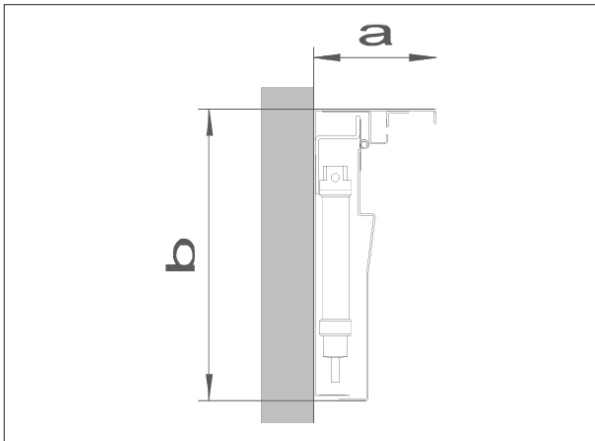


h = 125 mm  
t = 490 mm

d = 290 mm  
S = Infrared fuse

## Guide rails

Guide for open polygons



a = 117 mm

b = 278 mm