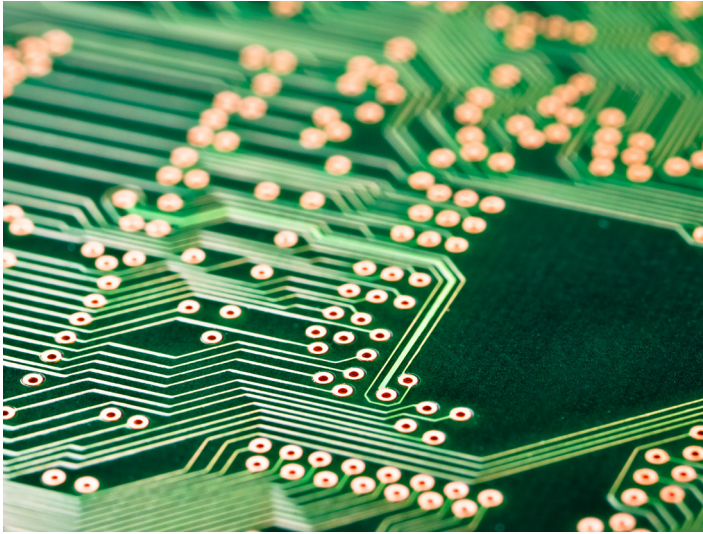


RZ7

RZ7-8IO



Product description

RZ7-8IO

The RZ7-8IO module is intended to be used as an input and output module for the RZ7 system. In the RZ7-7 bus system, the RZ7-8IO module is part of the CANopen bus.

Product description	Input and output module RZ7-8IO
Control voltage	24 V DC
Operation/Display	LED's status indicators on board
Potential-free outputs	8 programmable change-over contacts (30 V DC 2 A)
Inputs	8 x inputs plus switching via optocoupler
Housing	Bopla ET221
Protection class	IP64
Housing dimensions (W x H x D)	200 x 120 x 77 mm
Housing (colour)	similar to RAL 7035
Ambient temperature range	0 °C ... + 40 °C

Note:

The RZ7-8IO device implements the coupling and decoupling of data points (signals) from and into the RZ7 CANopen bus. The device can only be operated sensibly together with an RZ7 operator panel.