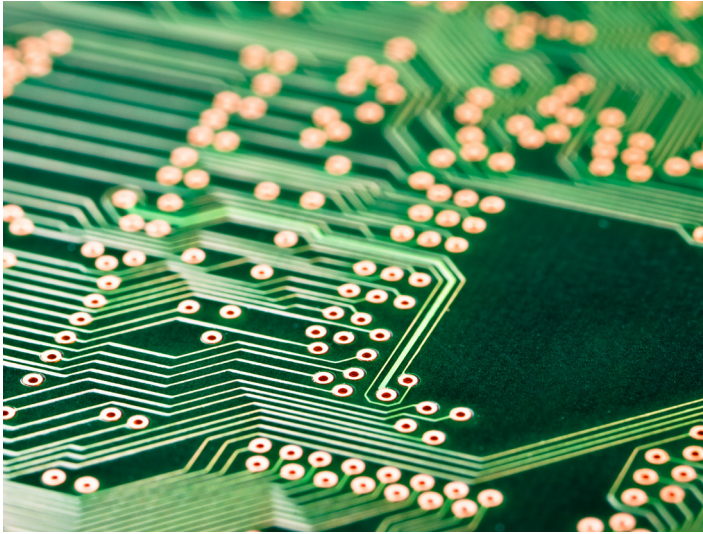


RZ7

RZ7-NT24-BMZ2 (BT), RZ7-NT24-BMZ2 (FA)



Product description

RZ7-BT

Device combination (release device with power supply), in accordance with the general type approval (aBG) for the installation of the hold-open system „RZ7-BT“ for fire and smoke protection closures according to aBG Z-6.500-2613.

RZ7-FA

Device combination (release device with power supply), in accordance with the general type approval (aBG) for the installation of the hold-open system „RZ7-FA“ for fire protection closures in the course of rail-bound conveyor systems according to aBG Z-6.500-2612.

Product description	Release device with power supply
Rated voltage	195,5...253 V AC
Mains frequency	47...63Hz
Connected load	200 VA AC
Inrush current	max. 10 A
Control voltage	24 V DC
Output current	3,5 A DC
Battery	2 x 12 V 7,2 Ah
Operation/Display	Membrane keypad
Fire detector connection	2 x fire detection lines with max. 20 fire detectors each
Connection locking device	According to item 2.4 under list 3, 4 or 5 of the aBG RZ7
External triggering	per fire detection line, manual release button or fire detector additionally possible
Potential-free outputs	- 1 changeover contact Fault Power supply (30 V DC 2 A) - 1 changeover contact Triggering fire alarm line 1 (30 V DC 2 A) - 1 changeover contact Triggering fire alarm line 2 (30 V DC 2 A)
Housing	Bopla CombiCard 6000
Protection class	IP66
Housing dimensions (W x H x D)	226,5 x 236,7 x 223,76 mm
Housing (colour)	similar to RAL 7038
Ambient temperature range	0 °C ... + 40 °C

Note:

If the RZ7-NT24-BMZ2 (BT) or the RZ7-NT24-BMZ2 (FA) is not installed in the effective range of the system's own detectors, e.g. equipment room or false ceiling, an additional detector is required. Design for installation of the hold-open system according to general design approval aBG Z-6.500-2613 (BT), aBG Z-6.500-2612 (FA). Other enclosure designs, e.g. operating protection, cabinet installation, are possible; additional information on this is contained in the operating instructions.