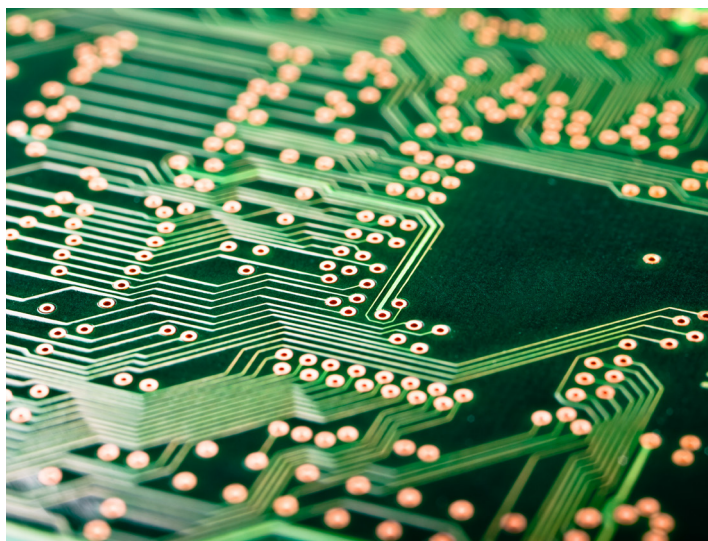


# RZ-24-05

## RELEASE DEVICE WITH POWER SUPPLY

### (Z-6.510-2435)



### Product description

Device combination (release device with power supply) for the installation of a hold-open system „RZ-8-FA“ in accordance with the general type approval (aBG) Z-6.500-2436

<b>Product designation</b>	Power supply with release device
<b>Rated voltage</b>	85...264 V AC
<b>Connected load</b>	14 VA
<b>Control voltage</b>	24 V DC
<b>Mains frequency</b>	50...60 Hz
<b>Power consumption</b>	approx. 30 mA
<b>Output current</b>	500 mA DC
<b>Operation / Display</b>	Membrane keypad
<b>Fire detector connection</b>	max. 20 fire detectors according to point 2.3 table 2 of the aBG „RZ-8-FA“ Z-6.500-2436
<b>Locking device connection</b>	according to item 2.4 tables 3, 4, 5, 6, 7 of the aBG „RZ-8-FA“ Z-6.500-2436
<b>Connection for external release</b>	Manual release button or fire detector additionally possible
<b>Potential free output</b>	Release RZ-24-05
<b>opt. with Powerpack Typ2</b>	To bridge short-term grid failures
<b>Housing (type)</b>	Cavity wall or flush-mounted device box
<b>Housing (size)</b>	81 x 81 x 12 mm
<b>Housing (colour)</b>	similar to RAL 9010
<b>Protection class</b>	IP 30
<b>Ambient temperature</b>	0 °C...+ 40 °C

Note: The RZ-24-05 unit combination must be installed in the detection range of the fire detectors of the respective termination; if necessary, an additional fire detector must be installed. Other housing designs, e.g. surface-mounted, operating protection, cover frame (with rectangular cut-out 55 x 55 mm) are possible; further information is provided in the operating instructions.